

Amana[®]

**Commercial
Microwave Oven
Owner's Manual**

RFS9MP*

RFS11MP*

* Additional alphanumeric characters representing other models in the series may follow each model number.

Keep these instructions for future reference. If the oven changes ownership, be sure this manual accompanies oven.

Contents

Model Identification	2
Microwave Power	2
Important Safety Instructions	
Warning	3
Caution	3
Precautions to Avoid Possible Exposure to Excessive Microwave Energy	4
Grounding Instructions	5
Installation	
Unpacking Equipment	5
Equipment Placement	5
Radio Interference	5
Control Pads	6
Displays	7
Operation	
Interrupting Operation	8
Canceling Mistakes	8
Microwave Utensils	8
Utensil Check Test	8
Operating Preprogrammed Pads	8
Reviewing Preprogrammed Pads	9
Manual Time Entry	9
Programming	9
Preprogrammed Number Pads	9
Multiple Heating Stages	10
Deactivating Control Panel	10
Deactivating Preprogrammed Pad	10
Reactivating Preprogrammed Pad	10
User Options	11
Care and Cleaning	
Changing Oven Light Bulb	12
Cleaning Interior, Exterior, and Door	12
Cleaning Splatter Shield	12
Cleaning Discharge Air Vents	13
Cleaning Air Intake Filter	13
Before Calling for Service	13
Warranties	
RFS9MP2 and RFS11MP2	14
RFS9MPLW and RFS11MPLW	15
Quick Reference Instructions	16

Model Identification

Complete enclosed registration card and promptly return. If registration card is missing, call Consumer Affairs Department at 1-800-843-0304 inside U.S.A. 1-319-622-5511 outside U.S.A.

When contacting Amana, provide product information. Product information is located on equipment serial plate. Record the following information:

Model Number: _____
Manufacturing Number: _____
Serial or S/N Number: _____
Date of purchase: _____
Dealer's name and address: _____

Keep a copy of sales receipt for future reference or in case warranty service is required.

Any questions or to locate an authorized servicer, call 1-800-843-0304 inside U.S.A. 1-319-622-5511 outside U.S.A. If an automated telephone system is reached, select Commercial Microwave Ovens category. Warranty service must be performed by an authorized servicer. Amana also recommends contacting an authorized servicer if service is required after warranty expires.

Microwave Power

Model RFS9MP* delivers 900 watts I.E.C. 705 of microwave power to oven cavity.
Model RFS11MP* delivers 1100 watts I.E.C. 705 of microwave power to oven cavity.

* Additional alphanumeric characters representing other models in the series may follow each model number.

IMPORTANT SAFETY INSTRUCTIONS



Recognize this symbol as a **SAFETY** message



WARNING

When using electrical equipment, basic safety precautions should be followed to reduce the risk of burns, electrical shock, fire, or injury to persons.

1. **READ** all instructions before using equipment.
2. **READ AND FOLLOW** the specific “**PRECAUTIONS TO AVOID POSSIBLE EXPOSURE TO EXCESSIVE MICROWAVE ENERGY**” on page 4.
3. This equipment **MUST BE GROUNDED**. Connect only to properly GROUNDED outlet. See “**GROUNDED INSTRUCTIONS**” on page 5.
4. Install or locate this equipment **ONLY** in accordance with the installation instructions in this manual.
5. Some products such as whole eggs and sealed containers – for example, closed glass jars – may explode and **SHOULD NOT** be **HEATED** in this oven.
6. Use this equipment **ONLY** for its intended use as described in this manual. Do not use corrosive chemicals or vapors in this equipment. This type of oven is specifically designed to heat or cook. It is not designed for industrial or laboratory use.
7. As with any equipment, **CLOSE SUPERVISION** is necessary when used by **CHILDREN**.
8. **DO NOT** operate this equipment if it has a damaged cord or plug, if it is not working properly, or if it has been damaged or dropped.
9. This equipment, including power cord, must be serviced **ONLY** by qualified service personnel. Special tools are required to service equipment. Contact nearest authorized service facility for examination, repair, or adjustment.
10. **DO NOT** cover or block filter or other openings on equipment.
11. **DO NOT** store this equipment outdoors. **DO NOT** use this product near water – for example, near a kitchen sink, in a wet basement, or near a swimming pool, and the like.
12. **DO NOT** immerse cord or plug in water.
13. Keep cord **AWAY** from **HEATED** surfaces.
14. **DO NOT** let cord hang over edge of table or counter.
15. See door cleaning instructions in “Care and Cleaning” section of manual on page 12.
16. **For commercial use only.**



CAUTION

To reduce the risk of fire in the oven cavity:

- a. **DO NOT** overcook food. Carefully attend equipment if paper, plastic, or other combustible materials are placed inside the oven to facilitate cooking.
- b. Remove wire twist-ties from paper or plastic bags before placing bag in oven.
- c. **KEEP** oven **DOOR CLOSED**, turn oven off, and disconnect the power cord, or shut off power at the fuse or circuit breaker panel, if materials inside the oven should ignite. Fire may spread if door is opened.
- d. **DO NOT** use the cavity for storage. **DO NOT** leave paper products, cooking utensils, or food in the cavity when not in use.

SAVE THESE INSTRUCTIONS

IMPORTANT SAFETY INSTRUCTIONS



CAUTION

To avoid personal injury or property damage, observe the following:

1. Briskly stir or pour liquids before heating with microwave energy to prevent spontaneous boiling or eruption. Do not overheat. If air is not mixed into a liquid, liquid can erupt in oven or after removal from oven.
2. Do not deep fat fry in oven. Fat could overheat and be hazardous to handle.
3. Do not cook or reheat eggs in shell or with an unbroken yolk using microwave energy. Pressure may build up and erupt. Pierce yolk with fork or knife before cooking.
4. Pierce skin of potatoes, tomatoes, and similar foods before cooking with microwave energy. When skin is pierced, steam escapes evenly.
5. Do not operate equipment without load or food in oven cavity.
6. Use only popcorn in packages designed and labeled for microwave use. Popping time varies depending on oven wattage. Do not continue to heat after popping has stopped. Popcorn will scorch or burn. Do not leave oven unattended.
7. Do not use regular cooking thermometers in oven. Most cooking thermometers contain mercury and may cause an electrical arc, malfunction, or damage to oven.
8. Do not heat baby bottles in oven.
9. Do not use metal utensils in oven.
10. Never use paper, plastic, or other combustible materials that are not intended for cooking.
11. When cooking with paper, plastic, or other combustible materials, follow manufacturer's recommendations on product use.
12. Do not use paper towels which contain nylon or other synthetic fibers. Heated synthetics could melt and cause paper to ignite.
13. Do not heat sealed containers or plastic bags in oven. Food or liquid could expand quickly and cause container or bag to break. Pierce or open container or bag before heating.
14. To avoid pacemaker malfunction, consult physician or pacemaker manufacture about effects of microwave energy on pacemaker.

PRECAUTIONS TO AVOID POSSIBLE EXPOSURE TO EXCESSIVE MICROWAVE ENERGY

- a. **DO NOT** attempt to operate this oven with the door open since open-door operation can result in harmful exposure to microwave energy. It is important not to defeat or tamper with the safety interlocks.
- b. **DO NOT** place any object between the oven front face and the door or allow soil or cleaner residue to accumulate on sealing surfaces.
- c. **DO NOT** operate the oven if it is damaged. It is particularly important that the oven door close properly and that there is no damage to the: (1) door (bent), (2) hinges and latches (broken or loosened), (3) door seals and sealing surfaces.
- d. The oven should **NOT** be adjusted or repaired by anyone except properly qualified service personnel.

SAVE THESE INSTRUCTIONS

Grounding Instructions

Installation



To avoid the risk of electrical shock or death, this equipment must be grounded.

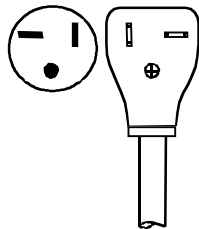


To avoid the risk of electrical shock or death, do not alter the plug.

This equipment **MUST** be grounded. In the event of an electrical short circuit, grounding reduces the risk of electric shock by providing an escape wire for the electric current. This oven is equipped with a cord having a grounding wire with a grounding plug. The plug must be plugged into an outlet that is properly installed and grounded.

Consult a qualified electrician or servicer if grounding instructions are not completely understood, or if doubt exists as to whether the equipment is properly grounded.

Do not use an extension cord. If the product power cord is too short, have a qualified electrician install a three-slot receptacle. This oven should be plugged into a separate 60 hertz circuit with the electrical rating as shown in the appropriate drawing. These models require a 120 supply voltage. When a microwave oven is on a circuit with other equipment, an increase in cooking times may be required and fuses can be blown.



NEMA 5-20R/5-20P
120V-20AMP

RFS9*
RFS11*

Unpacking Equipment

- Inspect equipment for damage such as dents in door or dents inside oven cavity.
- Report any dents or breakage to source of purchase immediately. Do not attempt to use oven if damaged.
- Remove all materials from oven interior.
- If oven has been stored in extremely cold area, wait a few hours before connecting power.

Equipment Placement

- Do not install equipment next to or above source of heat, such as pizza oven or deep fat fryer. This could cause microwave oven to operate improperly and could shorten life of electrical parts.
- Do not block or obstruct oven filter. Allow access for cleaning.

Radio Interference

Microwave operation may cause interference to radio, television, or similar equipment. Reduce or eliminate interference by doing the following:

- Clean door and sealing surfaces of oven according to instructions in "Care and Cleaning" section.
- Place radio, television, etc. as far as possible from oven.
- Use a properly installed antenna on radio, television, etc. to obtain stronger signal reception.

Control Pads

TIME ENTRY

Use to enter heating time without changing preprogrammed number pads.

MENU

Use to switch between 2 independent preprogrammed menus. Each menu contains up to 10 preprogrammed pads. Pads are programmed to heat for specific time and power level.

Pads 1-0

Use to begin heating with preprogrammed times and power levels or to enter times for "Manual Time Entry" cooking.

HOLD 0%, DEFROST 20%, MEDIUM 50%, MED-HI 70%

Use to select power level. Oven can heat at full or reduced power. If oven power level is set to 0% oven does not heat for programmed time. If no power level is selected, oven operates at 100% power.

START

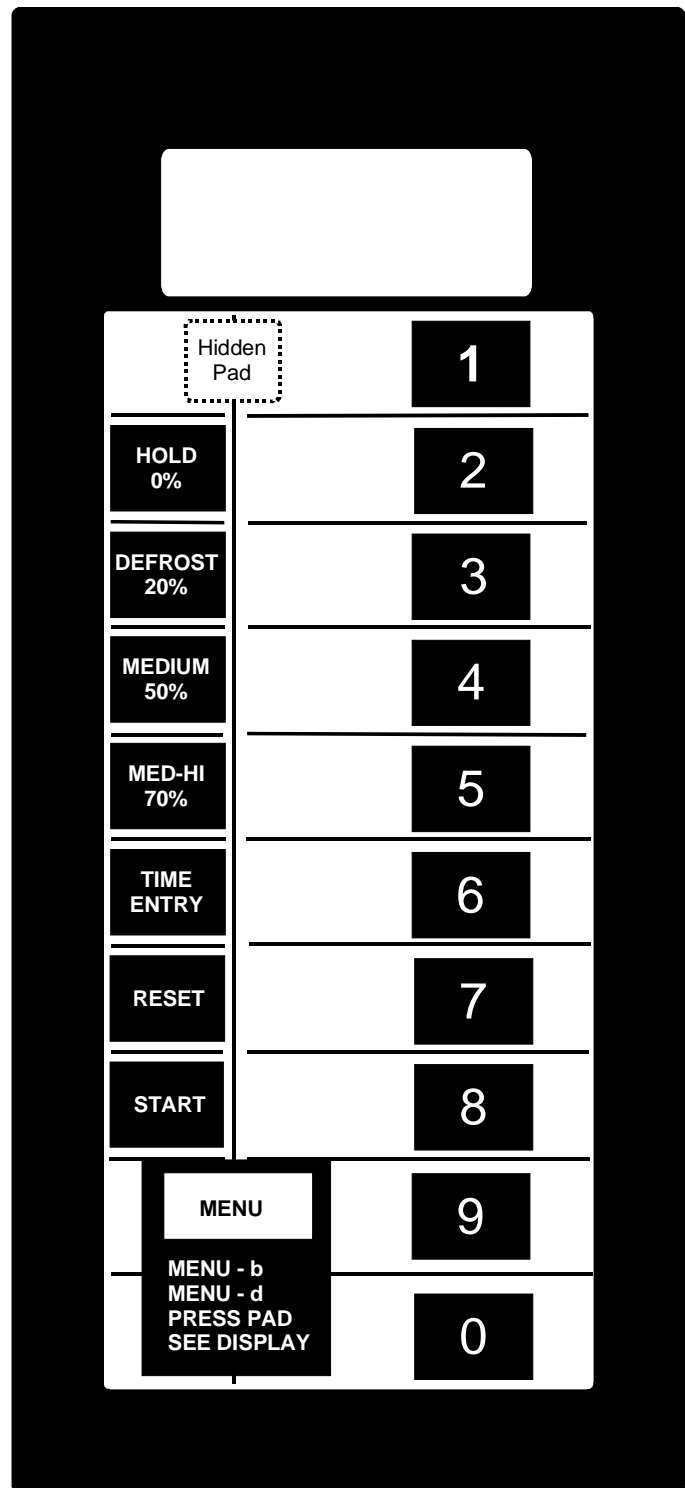
Use to start "Manual Time Entry" program or restart interrupted cooking cycle. Use to advance to next user option. Use to save times and power levels when programming pads.

STOP/RESET

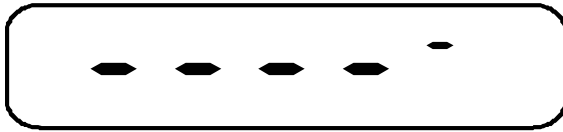
Use to exit programming mode and stop cooking during cooking cycle.

Hidden Pad

Use Hidden Pad to activate and deactivate numbered pads, and to change user options.



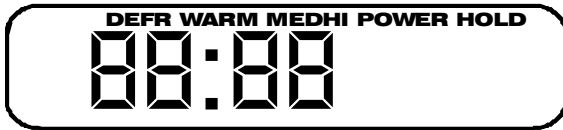
Displays



- Shows after oven is plugged in. Open oven door to clear.



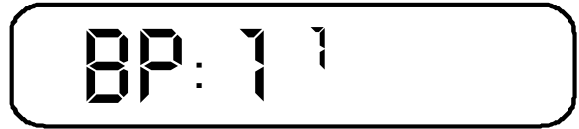
- “b” (breakfast) or “d” (dinner)—Shows active menu.
- “READY”—Indicates pads will accept entry. Shows when oven is paused or ready for next entry.



- “88:88”—Shows heating time.
- “POWER”—Shows when oven generates microwave energy.
- “HOLD, DEFR, WARM, MEDHI”—Shows when viewing stage with reduced power or hold. Blank space indicates full power.



- “Pb” or “Pd”—Indicates programming mode and current menu. See “Programming” section of manual for programming procedure.



- “bP1”—Indicates menu “b” in programming mode, and stage 1. The smaller “1” indicates pad 1 is being programmed.



- “OP:11”—Indicates programming user options mode. See “User Options” section of manual for programming procedure.



- “dd:dd”—Indicates number pad is deactivated. See “Deactivating Preprogrammed Pad” section of manual for activating and deactivating procedure.

Operation

Interrupting Operation

- Open oven door or press *RESET* pad to interrupt operation. Oven fan continues to operate. Display continues to show countdown time. Close door and press *START* pad to resume oven operation.

Canceling Mistakes

- If oven is not operating, press *RESET* pad to clear display.
- If oven is operating, press *RESET* pad once to stop oven, then again to clear display.
- If oven door is open and time shows in display, close oven door and press *RESET* pad to clear display.

Microwave Utensils

Recommended	Not Recommended
Glass/ceramic	Aluminum foil
Natural fiber cloth	Grocery bags
Non-recycled paper	Recycled paper
Plastic	Lead crystal,
Wood	Newspapers
	Metal,
	Metallic trimmed china

Utensil Check Test

Use the following test to check utensils for microwave safeness.

1. Place glass measuring cup of water next to empty dish to be tested in microwave oven.
2. Heat for one minute.
3. Check temperature of dish and water.
 - If dish remains cool and water is hot, dish is microwave safe.
 - If dish is slightly warm, use for short term cooking only.
 - If dish is hot and water is cool, do not use. Dish remains cool if not absorbing microwaves and microwaves are being absorbed by water. Dish becomes hot if absorbing microwaves.

Operating Preprogrammed Pads

Equipment has 2 menus with 10 preprogrammed number pads. Instructions are written for factory programmed ovens. Ovens that are reprogrammed can respond differently than described below.

1. Open oven door, place food in oven, and close oven door.
 - Display shows “b” or “d” and “READY”.
 - Fan and light operate.
 - If pad is not pressed in 30 seconds, open and close oven door again.
2. Press *MENU* pad to select preprogrammed menu if necessary.
 - “b” or “d” shows in display.
3. Press desired number pad.
 - Oven operates and time counts down.
 - Display shows “POWER” only when microwave energy is present.
 - If power level less than 100 percent power was programmed, display shows “COOK LEVEL” and power level. Display counts down cooking time.
 - If additional heating time is required, press preprogrammed pads before or after heating cycle ends.
4. Oven stops heating and oven signal sounds when heating timing elapses.

Preprogrammed Times and Cook Level

All preprogrammed pads arrive set at full power.

Pads	Heating Times
1	10 seconds
2	20 seconds
3	30 seconds
4	45 seconds
5	1 minute
6	1 minute 30 seconds
7	2 minutes
8	3 minutes
9	4 minutes
0	5 minutes

Programming

Reviewing Preprogrammed Pads

1. Open oven door.
 - Display shows “b” or “d” and “READY”.
 - Fan and light operate.
 - If door is closed or *RESET* pad is pressed before finishing programming sequence, oven exits programming mode.
2. Press and hold *TIME ENTRY* pad for approximately 15 seconds.
 - After 15 seconds, signal sounds. Display shows “Pb” or “Pd” indicating “b” or “d” menu.
3. Press *MENU* pad to select preprogrammed menu if necessary.
4. Press desired number pad.
 - Display shows heating time, pad number, and power level if less than 100 percent power.
5. Press *TIME ENTRY* pad to review heating stages for pad.
 - “(b or d)P” and stage show briefly, then heating time, pad number and power level if less than 100 percent power show in display.
6. Press *START* pad after reviewing preprogrammed pad.
 - Display shows “Pb” or “Pd” indicating “b” or “d” menu.
 - Repeat steps 3-6 to review another preprogrammed pad.
7. Press *RESET* pad or close oven door to exit programming mode.

Manual Time Entry

1. Open oven door, place food in oven, and close door.
 - Display shows “b” or “d” and “READY”.
 - Fan and light operate.
 - If pad is not pressed in 30 seconds, open and close oven door again.
2. Press *TIME ENTRY* pad.
 - Display shows “0000” and “READY”.
3. Press number pads to enter desired cooking time.
 - For example, to heat for 2 minutes 30 seconds, press *2*, *3*, and *0* pads.
4. Press a power level pad if power level less than 100 percent is required.
 - Display shows current power level if less than 100 percent power.
 - To restore power level to 100 percent, reenter cooking time.
5. Press *START* pad.
 - Oven operates and time counts down.
 - Display shows “POWER” only when microwave energy is present.
 - If power level less than 100 percent power was programmed, display shows power level. Display counts down cooking time.
6. Oven stops heating and oven signal sounds when heating timing elapses.

Preprogrammed Number Pads

1. Open oven door.
 - Display shows “b” or “d” and “READY”.
 - Fan and light operate.
 - If door is closed or *RESET* pad is pressed before finishing programming sequence, oven exits programming mode.
2. Press and hold pad *1* for approximately 15 seconds.
 - After 15 seconds, signal sounds. Display shows “Pb” or “Pd” indicating “b” or “d” menu.
3. Press *MENU* pad to select preprogrammed menu if necessary.
4. Press desired number pad.
 - Display shows heating time and power level if less than 100 percent power.
5. Press number pads to enter desired cooking time.
 - For example, to heat for 2 minutes 30 seconds, press *2*, *3*, and *0* pads.
6. Press a power level pad if power level less than 100 percent is required.
 - Display shows current power level if less than 100 percent power.
 - To restore power level to 100 percent, reenter cooking time.
7. Press *START* pad to save new heating time and power level in oven memory.
 - Display shows “Pb” or “Pd” indicating “b” or “d” menu.
 - Repeat step 3-8 to program additional pads.
8. Press *RESET* pad or close oven door to exit programming mode.

Multiple Heating Stages

Oven can be programmed to perform 4 independent heating cycles without interruption.

1. Open oven door.
 - Display shows “b” or “d” and “READY”.
 - Fan and light operate.
 - If door is closed or *RESET* pad is pressed before finishing programming sequence, oven exits programming mode.
2. Press pad *1* for approximately 15 seconds.
 - After 15 seconds, signal sounds. Display shows “Pb” or “Pd” indicating “b” or “d” menu.
3. Press *MENU* pad to select preprogrammed menu if necessary.
4. Press desired number pad.
 - Display shows heating time and power level if less than 100 percent power.
5. Press number pads to enter desired cooking time.
 - For example, to heat for 2 minutes 30 seconds, press *2, 3, and 0* pads.
6. Press a power level pad if power level less than 100 percent is required.
 - Display shows current power level if less than 100 percent power.
 - To restore power level to 100 percent, reenter cooking time.
8. Press *TIME ENTRY* pad.
 - Display briefly shows “bP1^(1-9,0)” or “dP1^(1-9,0)” indicating menu, programming, stage, and pad. Then cook time and power level for stage show in display.
 - Repeat steps 5-8 to create additional stages.
9. Press *START* pad to save new heating time and power level in oven memory.
10. Press *RESET* pad or close oven door to exit programming mode.

Deactivating Control Panel

1. Open oven door, and close oven door.
 - Display shows “b” or “d” and “READY”.
 - Fan and light operate.
 - If pad is not pressed in 30 seconds, open and close oven door again.
2. Press *TIME ENTRY* pad.
 - Display shows “0000” and “READY”.
3. Press *1,3,5, and 7* pad in sequence.
4. Press *TIME ENTRY* pad.
 - “LOC” and “READY” show in display.
 - All pads except *TIME ENTRY* are disabled.
 - To reactivate control repeat steps 1-4.

Deactivating Preprogrammed Pad

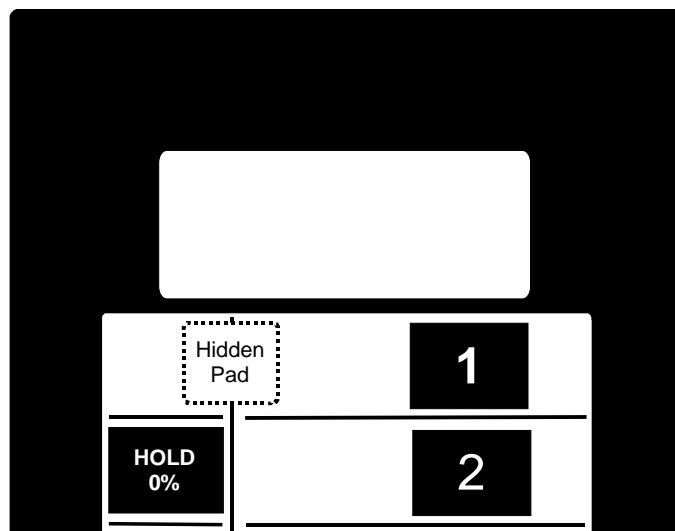
1. Open oven door.
 - Display shows “b” or “d” and “READY”.
 - Fan and light operate.
 - If door is closed or *RESET* pad is pressed before finishing programming sequence, oven exits programming mode.
2. Press and hold pad *1* for approximately 15 seconds.
 - After 15 seconds, signal sounds. Display shows “Pb” or “Pd” indicating “b” or “d” menu.
3. Press desired number pad.
 - Display shows heating time and power level if less than 100 percent power.
4. Press hidden pad.
 - “*dddd*” and pad number show in display.
5. Press *START* pad to save in oven memory.
 - To reactivate pad, repeat steps.
6. Press *RESET* pad or close oven door to exit programming mode.

Reactivating Preprogrammed Pad

1. Open oven door.
 - Display shows “b” or “d” and “READY”.
 - Fan and light operate.
 - If door is closed or *RESET* pad is pressed before finishing programming sequence, oven exits programming mode.
2. Press and hold pad *1* for approximately 15 seconds.
 - After 15 seconds, signal sounds. Display shows “Pb” or “Pd” indicating “b” or “d” menu.
3. Press desired number pad.
 - Display shows heating time and power level if less than 100 percent power.
4. Press hidden pad.
 - Display shows “0000” and “READY”.
5. Program pad according to “Preprogrammed Number Pads” section step 5-8.
6. Press *START* pad to save in oven memory.
 - To reactivate pad, repeat steps.
7. Press *RESET* pad or close oven door to exit programming mode.

User Options

1. Open oven door.
 - If door is closed or *RESET* pad is pressed before finishing programming sequence, oven exits programming mode.
2. Press and hold pad 1 for approximately 15 seconds.
 - After 15 seconds, signal sounds. Display shows "P".
3. Press hidden pad.
 - Display shows "OP: 1(0, 1-3)".
 - "OP" represents optional program mode, first number represents option number and second number represents functions currently selected for option.
4. Press *START* pad to advance to next option. See table for options.
5. Press number pad (0,1-3) to change option.
6. Press *START* pad to save changes.
 - Repeat steps 4-6 to change additional options.
7. Press *RESET* pad or close oven door to exit programming mode.



Numbered Pads	Display	Options () = Factory Settings
1	OP:10 OP:11	Prevents adding heating time while oven is heating. (Allows adding heating time while oven is heating.)
2	OP:20 OP:21	Sounds 3 second signal at end of heating cycle. (Sounds 4 short signals at end of heating cycle.)
3	OP:30 OP:31	(Allows 99 minutes 99 seconds of heating time.) Allows 10 minutes of heating time.
4	OP:40 OP:41	Prevents signal when pad is pressed. (Allows signal when pad is pressed.)
5	OP:50 OP:51	(Allows oven to resume heating time countdown after door is opened during cycle.) Cancels heating time count down after door is opened during cycle.
6	OP:60 OP:61	(Allows power levels to be used.) Prevents use of power levels.
7	OP:70 OP:71 OP:72 OP:73	Eliminates end of heating cycle signal. Sets end of heating cycle signal volume to low. Sets end of heating cycle signal volume to medium. (Sets end of heating cycle signal volume to high.)
8	OP:80 OP:81	Sets oven to standard operation. Blower starts when oven operates. (Sets oven to instant on operation. Blower starts when oven door is opened.)
9	OP:90 OP:91	(Allows use of variable time entry and preprogrammed pads.) Allows use of preprogrammed pads only.
0	OP:00 OP:01	(Allows pads to be deactivated.) Prevents pads from being deactivated.

Care and Cleaning

Record all inspections and repairs for future reference.

Changing Oven Light Bulb

CAUTION

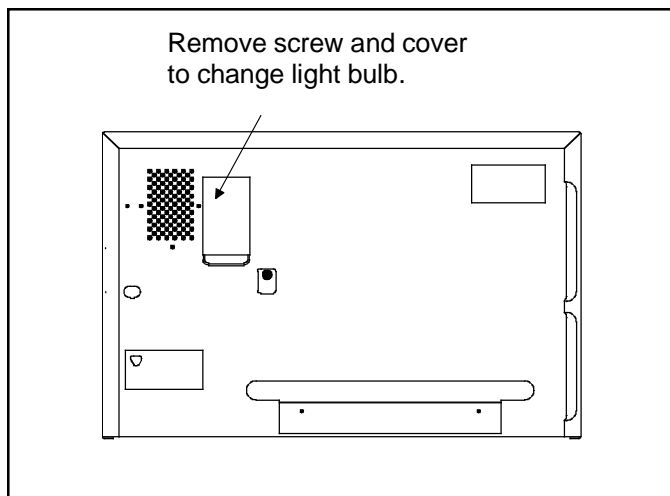
To avoid electrical shock hazard unplug power cord or open circuit breaker to microwave oven before replacing light bulb. After replacing light bulb, reconnect power.

To avoid burns and cuts, wear gloves to protect hands should bulb break. If hot, allow bulb to cool.

Tools and Bulb

- Protective gloves
- Standard screwdriver
- Light bulb rated 115-125 volt, 40 watt

1. Unplug oven.
2. Remove screw from back of oven and remove access cover.
 - See illustration below.
3. Remove bulb by turning counterclockwise, being careful not to burn fingers or break bulb.
 - Replace with bulb rated 115-125 volt, 40 watt.
4. Plug in oven.



Cleaning Interior, Exterior, and Door

Clean microwave oven with mild detergent in warm water using soft sponge or cloth. Wring sponge or cloth to remove excess water before wiping equipment. If desired, boil a cup of water in microwave oven to loosen soil before cleaning.

- Do not use abrasive cleansers or cleaners containing ammonia. These could damage finish.
- Never pour water into microwave oven bottom.
- Do not use water pressure type cleaning systems.

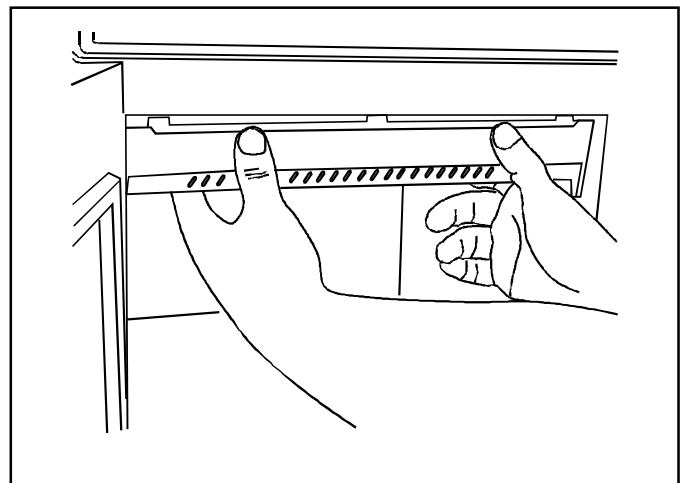
Cleaning Splatter Shield

CAUTION

To avoid oven cavity damage, do not operate oven without splatter shield in place. Arcing will damage oven cavity and antenna when operated without shield in place.

Splatter shield keeps top of microwave oven cavity and antenna from becoming soiled. Clean soil from shield with damp cloth or clean with mild detergent and water. Remove splatter shield for easy cleaning.

1. Unplug oven before removing splatter shield to stop antenna from rotating.
2. Place fingers on front of shield, push forward, and down.
 - When removing and replacing splatter shield, be careful not to bend antenna.

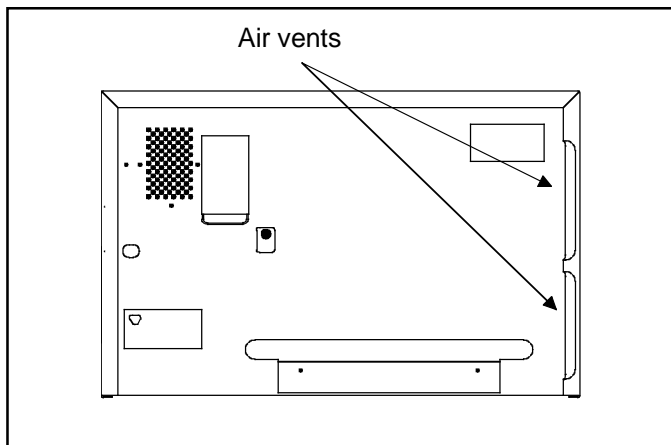


3. Wash shield in hot, soapy water. Rinse and dry thoroughly.
 - Do not wash splatter shield in dishwasher.
 - Do not use abrasive cleaners.
4. Reinstall splatter shield by fitting tabs at top of oven cavity back. Lift and press front of shield until shield snaps into place.

Before Calling for Service

Cleaning Discharge Air Vents

Check for a buildup of cooking vapors along discharge louvers in back of oven monthly. Clean air vent with damp cloth to ensure proper airflow. Dry thoroughly.



If oven does not operate:

- Confirm oven is plugged into dedicated circuit.
- Confirm oven is on grounded and polarized circuit. (Contact electrician to confirm.)
- Check fuse or circuit breaker.

If oven light does not work:

- Confirm light bulb is screwed in tightly.
- Confirm light bulb has not failed.

If oven operates intermittently:

- Check filter inlet and discharge areas for obstructions.

If oven does not accept entries when pad is pressed:

- Open and close oven door. Press pad again.

If oven malfunctions:

- Unplug oven, wait for 1 minute, and plug in oven.

Cleaning Air Intake Filter

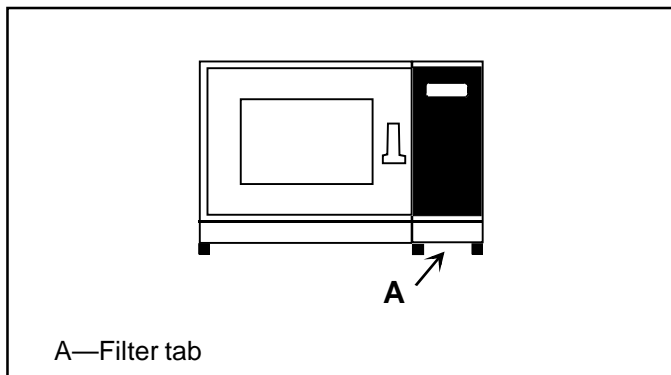


CAUTION

To avoid overheating and oven damage, clean air filter regularly.

To avoid oven door damage, do not lift oven by oven door.

Filter is located below oven control panel. Clean air intake filter weekly for proper air flow. Wash filter in hot water and mild detergent. Do not use oven without filter in place. Remove filter to clean. To remove filter, grasp filter tab and slide out.



A—Filter tab



WARNING

To avoid electrical shock which can cause severe personal injury or death, do not remove outer case at any time. Only authorized servicer should remove outer case.

Any questions or to locate an authorized servicer, call 1-800-843-0304 inside U.S.A. 1-319-622-5511 outside U.S.A. If an automated telephone system is reached, select Commercial Microwave Ovens category. Warranty service must be performed by an authorized servicer. Amana also recommends contacting an authorized servicer if service is required after warranty expires.

Warranties

RFS9MP2 and RFS11MP2

Amana® COMMERCIAL MICROWAVE OVEN FULL THREE YEAR WARRANTY

Amana Appliances warrants this product when the original purchaser uses the oven for commercial food service preparation.

FIRST THRU THIRD YEAR

Amana Appliances will repair or replace, including related labor and travel, any part (F.O.B. Amana, Iowa) which proves to be defective as to workmanship or materials.

OWNER'S RESPONSIBILITIES:

- Provide any defective part to an authorized Amana® servicer.
- Provide proof of purchase.
- Provide normal care and maintenance, including cleaning as instructed in owner's manual.
- Replace owner replaceable items where directions appear in the owner's manual.
- Make product accessible for service.
- Pay for premium service costs for service outside servicer's normal business hours.
- Pay for service calls related to product installation and customer education.

ITEMS NOT COVERED:

- Normal product maintenance and cleaning.
- Lost or broken air filters.
- Light bulbs.
- Lost or broken grease shields or knobs.
- Damages which occur in shipment.
- Broken ceramic shelves.
- General rebuilding or refurbishing that is not a legitimate warranty repair.
- Failures caused by:
 - Unauthorized service.
 - Grease or other material buildup due to improper cleaning or maintenance.
 - Accidental or intentional damage.
 - Connection to an improper power supply.
 - Acts of God.
 - Operating an empty oven.
 - Use of improper pans, containers, or accessories that cause damage to the product.

WARRANTY LIMITATIONS:

- Begins at date of original purchase.
- Applies to product used for NORMAL commercial food preparation.
- Applies to product used within the United States or in Canada if product has appropriate agency listing when shipped from the factory.
- Service must be performed by an authorized Amana® servicer.
- Adjustments covered during first year only.

WARRANTY IS VOID IF:

- Serial plate is defaced.
- Product is altered by user.
- Product is not installed or used according to manufacturer's instructions.

IN NO EVENT SHALL AMANA APPLIANCES BE LIABLE FOR INCIDENTAL OR CONSEQUENTIAL DAMAGES*

*This warranty gives you specific legal rights and you may have others which vary from state to state. For example, some states do not allow the exclusion or limitation of incidental or consequential damages so this exclusion may not apply to you.

For answers to questions regarding the above or to locate an authorized Amana® servicer, contact:

Amana Appliances
2800 220th Trail
PO Box 8901
Amana, Iowa 52204-0001
USA
1-800-843-0304 inside U.S.A.
1-319-622-5511 outside U.S.A.

RFS9MPLW and RFS11MPLW

Amana[®] COMMERCIAL MICROWAVE OVEN

FULL ONE YEAR WARRANTY LIMITED THREE YEAR WARRANTY

Amana Appliances warrants this product when the original purchaser uses the oven for commercial food service preparation.

FIRST YEAR

Amana Appliances will repair or replace, including related labor and travel, any part (F.O.B. Amana, Iowa) which proves to be defective as to workmanship or materials.

SECOND AND THIRD YEAR

Amana Appliances will provide a replacement magnetron tube, part only (F.O.B. Amana, Iowa), which proves defective as to workmanship or materials.

OWNER'S RESPONSIBILITIES:

- Provide any defective part to an authorized Amana[®] servicer.
- Provide proof of purchase.
- Provide normal care and maintenance, including cleaning as instructed in owner's manual.
- Replace owner replaceable items where directions appear in the owner's manual.
- Make product accessible for service.
- Pay for premium service costs for service outside servicer's normal business hours.
- Pay for service calls related to product installation and customer education.
- Pay for servicer's labor and travel expenses under limited warranty provisions.

ITEMS NOT COVERED:

- Normal product maintenance and cleaning.
- Lost or broken air filters.
- Light bulbs.
- Lost or broken grease shields or knobs.
- Damages which occur in shipment.
- Broken ceramic shelves.
- General rebuilding or refurbishing that is not a legitimate warranty repair.
- Failures caused by:
 - Unauthorized service.
 - Grease or other material buildup due to improper cleaning or maintenance.
 - Accidental or intentional damage.
 - Connection to an improper power supply.
 - Acts of God.
 - Operating an empty oven.
 - Use of improper pans, containers, or accessories that cause damage to the product.

WARRANTY LIMITATIONS:

- Begins at date of original purchase.
- Applies to product used for NORMAL commercial food preparation.
- Applies to product used within the United States or in Canada if product has appropriate agency listing when shipped from the factory.
- Service must be performed by an authorized Amana[®] servicer.
- Adjustments covered during first year only.

WARRANTY IS VOID IF:

- Serial plate is defaced.
- Product is altered by user.
- Product is not installed or used according to manufacturer's instructions.

IN NO EVENT SHALL AMANA APPLIANCES BE LIABLE FOR INCIDENTAL OR CONSEQUENTIAL DAMAGES*

*This warranty gives you specific legal rights and you may have others which vary from state to state. For example, some states do not allow the exclusion or limitation of incidental or consequential damages so this exclusion may not apply to you.

For answers to questions regarding the above or to locate an authorized Amana[®] servicer, contact:

Amana Appliances
2800 220th Trail
PO Box 8901
Amana, Iowa 52204-0001
USA
1-800-843-0304 inside U.S.A.
1-319-622-5511 outside U.S.A.

Quick Reference Instructions

Read “Important Safety Information” before using “Quick Reference Instructions”. If there are unanswered questions, see detailed sections of this manual.

Operating Preprogrammed Pads

1. Open oven door, place food in oven, and close door.
2. Press *MENU* pad to select preprogrammed menu if necessary.
3. Press desired number pad.
4. Oven stops heating and oven signal sounds when heating timing elapses.

Reviewing Preprogrammed Pads

1. Open oven door.
2. Press and hold *TIME ENTRY* pad for approximately 15 seconds.
3. Press *MENU* pad to select preprogrammed menu if necessary.
4. Press desired number pad.
5. Press *TIME ENTRY* pad to review heating stages for pad.
6. Press *START* pad after reviewing preprogrammed pad.
7. Press *RESET* pad or close oven door to exit programming mode.

Manual Time Entry

1. Open oven door, place food in oven, and close door.
2. Press *TIME ENTRY* pad.
3. Press number pads to enter desired cooking time.
4. Press a power level pad if power level less than 100 percent is required.
5. Press *START* pad.
6. Oven stops heating and oven signal sounds when heating timing elapses.

Programming Preprogrammed Number Pads

1. Open oven door.
2. Press and hold pad *1* for approximately 15 seconds.
3. Press *MENU* pad to select preprogrammed menu if necessary.
4. Press desired number pad.
5. Press number pads to enter desired cooking time.
6. Press a power level pad if power level less than 100 percent is required.
7. Press *START* pad to save new heating time and power level in oven memory.
8. Press *RESET* pad or close oven door to exit programming mode.

Programming Multiple Heating Stages

1. Open oven door.
2. Press pad *1* for approximately 15 seconds.
3. Press *MENU* pad to select preprogrammed menu if necessary.
4. Press desired number pad.
5. Press number pads to enter desired cooking time.
6. Press a power level pad if power level less than 100 percent is required.
8. Press *TIME ENTRY* pad.
9. Press *START* pad to save new heating time and power level in oven memory.
10. Press *RESET* pad or close oven door to exit programming mode.

Programming Deactivating Control Panel

1. Open oven door, and close oven door.
2. Press *TIME ENTRY* pad.
3. Press *1,3,5,* and *7* pad in sequence.
4. Press *TIME ENTRY* pad.

Deactivating Preprogrammed Pad

1. Open oven door.
2. Press and hold pad *1* for approximately 15 seconds.
3. Press desired number pad.
4. Press hidden pad.
5. Press *START* pad to save in oven memory.
6. Press *RESET* pad or close oven door to exit programming mode.

Reactivating Preprogrammed Pad

1. Open oven door.
2. Press and hold pad *1* for approximately 15 seconds.
3. Press desired number pad.
4. Press hidden pad.
5. Program pad according to “Preprogrammed Number Pads” section step 5-8.
6. Press *START* pad to save in oven memory.
7. Press *RESET* pad or close oven door to exit programming mode.

User Options

1. Open oven door.
2. Press and hold pad *1* for approximately 15 seconds.
3. Press hidden pad.
4. Press *START* pad to advance to next option. See table for options.
5. Press number pad (0,1-3) to change option.
6. Press *START* pad to save changes.
7. Press *RESET* pad or close oven door to exit programming mode.